

Welcome to 15 Long,  
home of the Acute  
Care for Elders (ACE)  
Program at UCSF  
Medical Center!

The ACE program was established at UCSF to improve the experience of older adults during and after hospitalization. We focus on the unique care needs of older patients. Our team of nurses, physicians, therapists, and patient care assistants have received special geriatric training and work alongside your primary doctors to treat your medical diagnoses. Our goal is to help preserve your independence and keep you physically and mentally active to ensure a smooth transition back to your community upon discharge.

**During your stay, we ask for a few contributions from you:**

1. Please get out of bed to a chair for all meals. If you have difficulty moving, we will provide assistance.
2. Please walk in the hallway 3 times daily. Again, if assistance is needed, the hospital staff will happily help. Though hospital policy prevents you from being able to leave the floor, we encourage you to walk in the 15 L hallways.
3. Please remain as active as possible. Use the activity room L1525, designed specifically for ACE patients, with a dining table, games, reading material, and activities. Ask your nurse for information about upcoming activities.
4. Drink plenty of water! This will aid in your recovery and increase the likelihood that you will leave here strong and independent.
5. A good night's sleep is critical to healing and well-being. We ask that you don't sleep with the lights or TV on. Staying awake during the day is also important, so minimize napping. The staff will to their part and try to avoid unnecessary nighttime interruptions whenever possible.

**Welcome to the ACE Program!** Please let us know if there is anything we can do to make you more comfortable and help promote your function and well-being.

# Acute Care for Elders (ACE) team



**Stephanie Rogers, MD**  
Medical Director



**Megan Rathfon, NP**  
ACE Coordinator



**Jennifer Miranda**  
Nurse Manager



**Mailah (Baylon) Umali,  
BSN, RN-BC**  
Assistant Nurse Manager



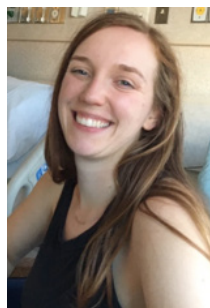
**Yali Brennan, PharmD,  
CDE, NBC-HWC**  
Pharmacist



**Vicki Ising Jue, PharmD**  
Pharmacist



**Liza Eckles**  
Physical Therapist



**Sara Howe**  
Occupational Therapist



**The Rev. Fr. Joseph A.  
Delgado**  
Chaplain Resident Spiritual  
Care Services