

UCSF GeriNews

A multi-campus division

February 28th, 2025



UCSF Division of Geriatrics
Department of Medicine



ZUCKERBERG
SAN FRANCISCO GENERAL
Hospital and Trauma Center

Figure. Exclusion of Older Asian American, Native Hawaiian, and Pacific Islander Adults From the Multi-ethnic Observational Study in American Asian and Pacific Islander Communities (MOSAAIC) Study

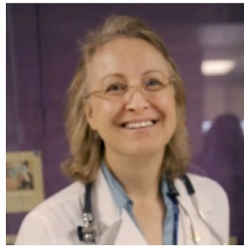


Copyright, Lingsheng Li, MD, MHS. Published with permission.

jamainternalmedicine.com

JAMA Internal Medicine Published online February 24, 2025

Lingsheng Li, MD, MHS, Anna Chang, MD, and Ken Covinsky, MD, MPH published a [Viewpoint](#) piece in JAMA IM on the importance of addressing structural inequities by resisting both racism and ageism in clinical research.



Congratulations to [Josette Rivera, MD](#), [Michael Harper, MD](#), and [Kathryn Eubank, MD](#) on receiving a four-year \$1.6 million dollar contract from the California Department of Public Health (CDPH) to increase competence in age-friendly and dementia care by implementing workforce training, resource development, and practice implementation support for rural and tribal primary care clinics. Funded by the CDPH Alzheimer's Disease Program (ADP) Block Tribal/Rural Initiative, this program will also provide state-wide resources to support screening, diagnosis, and care of persons with Alzheimer's Disease and Related Dementias (ADRD).



[Anna Chodos, MD, MPH](#), represented [Caregivers As Partners in Care Teams \(CAP-CT\)](#) as part of a panel of presenters at the [Age-Friendly Health Systems Research Network webinar on Caregiving in Age-Friendly Health System](#) on February 21. Panelists shared their perspectives on conducting research on caregiving, discussed lessons learned on including caregivers in research on AFHS, and highlighted both past and ongoing research.



UCLA medical student [Marlee Magee](#), along with [Mimi Tarn](#) and [Janice Schwartz, MD](#), recently published a study in *BMC Primary Care* titled, "[Why patients fail to seek information on OTC product interactions with a direct-acting oral anticoagulant: perspectives on information-seeking.](#)" The study highlights that patients often believe it is the prescriber's responsibility to inform them about potential interactions.



Caregivers As Partners in Care Team (CAP-CT) had the privilege of celebrating National Caregivers Day on Friday, February 21, by visiting On Lok Senior Center to show appreciation for caregivers and the incredible older adults they support. CAP-CT volunteered at their Latin dance party because what better way to honor caregiver dedication than with joy, movement, and community? CAP-CT remains committed to promoting caregiver engagement within care teams—helping to enhance the health and well-being of both patients and caregivers.



Former CRC and MSTAR student [Haley Shiff](#), along with [Theresa Allison, MD, PhD](#), [Madina Halim](#), [Ken Covinsky, MD, MPH](#), [Alexander Smith, MD, MPH, MS](#), [Deborah Barnes, PhD](#), [Jennie Gubner, PhD](#), and [Kara A. Zamora, PhD](#) published an article on the lived experiences of spouses and partners providing dementia care at home. Their *Journal of Applied Gerontology* article explores the challenges and bright spots of dementia caregiving within relationships of up to 60 years.



[PC for Patients with Substance Use Disorder: Janet Ho, Sach Kale, Julie Childers](#)

[Visit the GeriPal Blog](#)

GERIATRIC & PALLIATIVE MEDICINE GRAND ROUNDS



[Ken Covinsky, MD, MPH](#)

Professor of Medicine, Division of Geriatrics,
University of California, San Francisco

***Ageism in Health Care: Under Treatment, Over
Treatment, or All of the Above?***

[View recording](#)



Mike Malone, MD

Medical Director of Aurora Health Care – Senior Services and the Aurora at Home; Clinical Adjunct Professor of Medicine, University of Wisconsin School of Medicine and Public Health

A Geriatrician as a Leader - Bringing "best practice" to an aging America

Wednesday, March 26, 2025

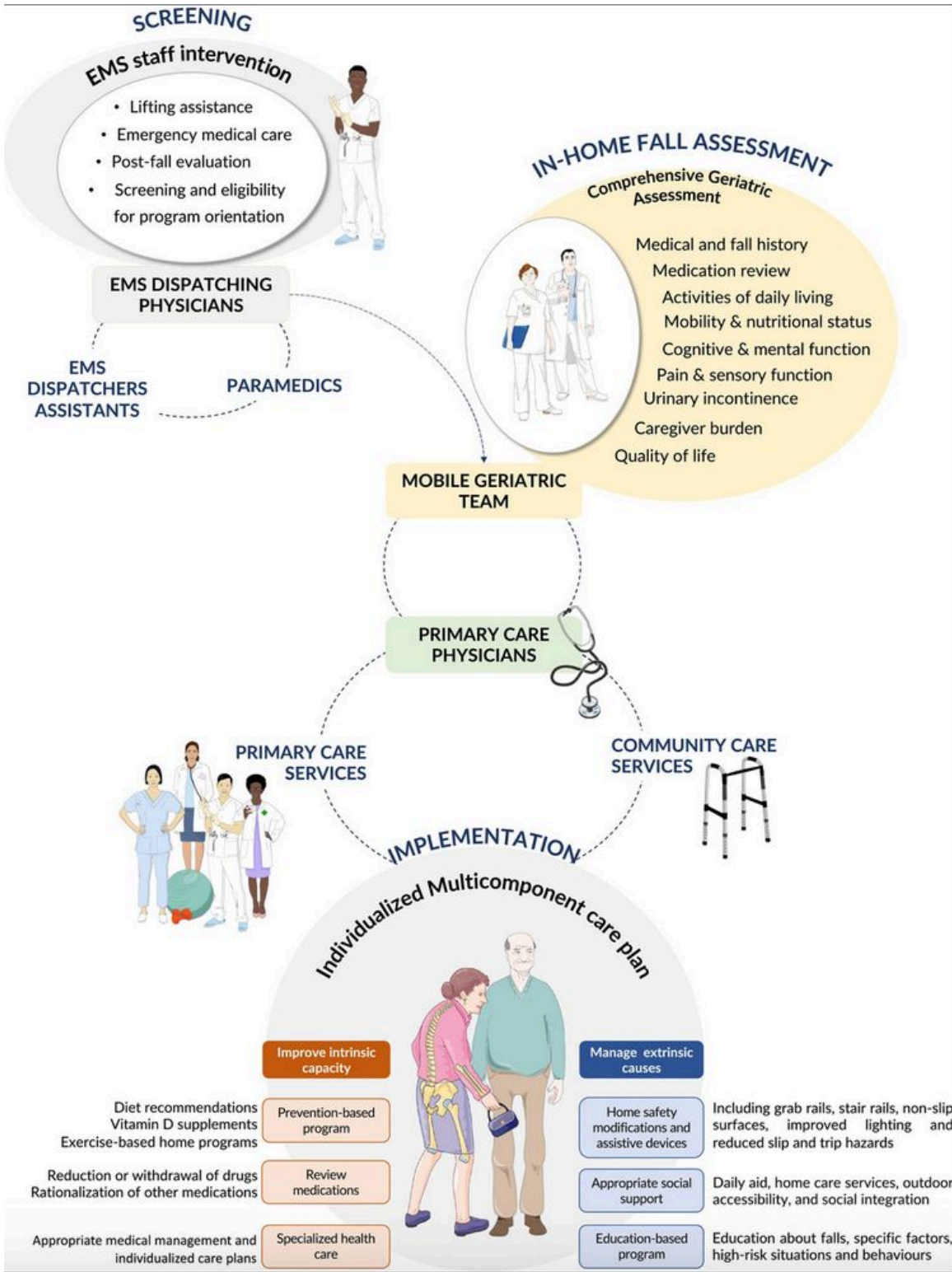
4:00 - 5:00 PM

Location: HSW-300 and via Zoom

[Register here](#)

[View Past Grand Rounds Recordings](#)

GERI BLUESKY POST OF THE WEEK



A pretty cool mobile geriatric team (MGT) in the Indre-et-Loire county of France which collaborates with EMS and primary care physicians to provide care for older adults who have been identified as fallers.

<https://agsjournals.onlinelibrary.wiley.com/doi/10.1111/jgs.19350> #medsky

”

- Eric Widera, MD @ewidera.bsky.social



Advance Your Career with Talent Marketplace

UCSF's new staff career development platform is nearly ready! In this webinar, we'll take a guided tour of new tools for advancing our career paths.

Wednesday, 3/26, 12:10-1:00 pm, via Zoom

[Register Here](#)

GERI COMMUNITY RESOURCE

Welcome to UCSF
Geriatrics Community
Resources



This week's Geri Community Resource is: [San Francisco Village](#).



[San Francisco Village](#) is a non-profit membership organization dedicated to serving San Franciscans ages 60 and above, offering a range of support services for a monthly fee of \$10-\$50 on a graduated scale and utilization of the program. They provide a wellness program to assist members transitioning home after hospital discharge, free for the first 90 days with a referral. Their services include help with groceries, laundry, simple household tasks, and transportation to medical appointments – ensuring seniors receive the care and support they need. Please contact SF Village to learn more at 415-387-1375 or email info@sfvillage.org.

[Find Geriatrics
Community
Resources here](#)

UPCOMING EVENTS

March 5: Geriatrics
Works in Progress
8:30 - 9:40 AM
Speaker: TBD
[Zoom Link](#)

March 12: Geriatrics
Works in Progress
8:30 - 9:40 AM
Speaker: TBD
[Zoom Link](#)

March 19: Geriatrics
Works in Progress
8:30 - 9:40 AM
Speaker: TBD
[Zoom Link](#)

EMPLOYMENT OPPORTUNITIES

UCSF Division of Geriatrics is Recruiting!
[Click here for more details>>](#)

Current Career Opportunities:

- [Clinician Educator \(JPF05152\)](#).
- [Research Scientist \(JPF04741\)](#).
- [Harris Fishbon Distinguished Professor for Clinical Translational Research in Aging \(JPF05153\)](#).
- [Research Associate \(82976BR\)](#).
- [Clinical Research Coordinator \(83592BR\)](#).

GIVING



Donations play a vital role in sustaining our Mission. [Learn More >>](#)

[Donate now](#)

For questions, comments, or suggestions, email GeriAdmin@ucsf.edu

UCSF Division of Geriatrics | 490 Illinois Street, Floor 8, San Francisco, CA 94143 | geriatrics.ucsf.edu

