

UCSF GeriNews

A multi-campus division

June 13th, 2025



UCSF Division of
Geriatrics
Department of Medicine



ZUCKERBERG
SAN FRANCISCO GENERAL
Hospital and Trauma Center



GERI FELLOWS GRADUATION 2025

We're so proud of our graduating geriatrics and geripal fellows! They are open, engaged, thoughtful, creative, and service-minded advocates, ready to spread their wings and improve care for older adults at UCSF and beyond. [Kathleen Lo, MD](#) and [Natalie Tjota, MD](#) will be working at PACE programs in Southern California and Seattle, respectively, [Kristie Hsu, MD](#) will be working in short stay rehab at the VA in San Diego, [Stephanie Cordonnier, MD](#) will be finishing her fellowship with us in the fall, [Catherine Gordon, MD](#) will be continuing with us for her second year of geripal fellowship, and [Ryan McMahan, MD, MAS](#) will be staying on as a T32 fellow. We're grateful that they all chose to train with us; they've left our fellowship and division a better place. We can't wait to continue to support them in their next chapters!



Congratulations to our graduating T32 fellows: [Jasmine Santoyo-Olsson, DrPH, MS](#), [Angela Suen, MD](#), and [Lingsheng Li, MD, MHS](#)!

[Learn more about our graduating T32 fellows](#)

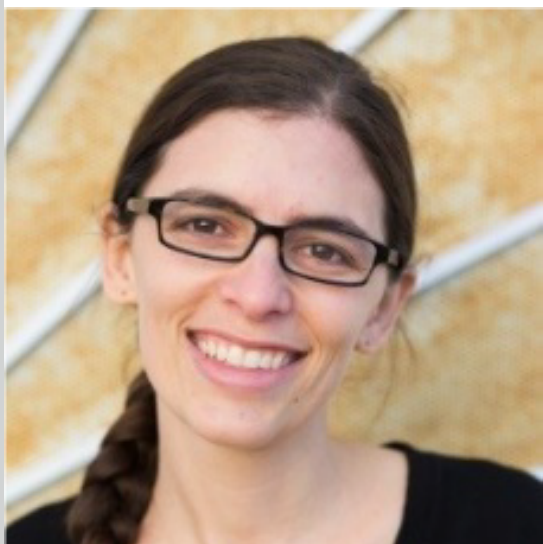


Congratulations to our two VA Quality Scholars, **Caroline Dancu, RN, PhD**, and **Preston Carroway, MD**, who graduated this past Wednesday!

[Learn more about their accomplishments](#)



[Candace Kim, MD](#) and the ZSFG AFED team received the Interprofessional Collaboration Award at the ZSFG Medical Staff Annual Meeting. The award was given by CEO Susan Ehrlich and CMO Gabe Ortiz and is awarded to interdisciplinary teams for their commitment to collaborative excellence. The nomination included quotes from each of the team members who commented on their passion to improve care in the emergency department for older adults, which the group has evolved to collectively embrace as their mission.



Congratulations to [Evie Kalmar, MD, MS](#), on being selected as Teacher of the Year by this year's fellows in the UCSF Division of Geriatrics! Thank you for your outstanding dedication to teaching and mentorship.



[Janice Schwartz, MD](#), delivered the Rawls-Palmer Progress in Medicine Award lecture, titled "The Clinical Pharmacology of Aging: From Individuals to Populations," at the annual meeting of the American Society for Clinical Pharmacology and Therapeutics in Washington, DC, on May 30. She is pictured with Les Benet, PhD, former Chair of the UCSF School of Pharmacy, who nominated and introduced her.



Recruiting Participants for a Study to Improve End-of-Life Care for Families Affected by Dementia or Memory Loss

Drs. [Krista Harrison](#), [Alexander Smith](#), [Rebecca Sudore](#), [Jasmine Santoyo-Olsson](#), [Lingsheng Li](#), and others at UCSF are conducting the [HEARD Study](#) (Hospice & End-of-life care for people impacted by Alzheimer's and Related Dementias) to develop recommendations to improve dementia and end-of-life care. They are recruiting participants to tell them their stories about providing or organizing end-of-life care for someone impacted by dementia or memory loss. They are currently focused on recruiting Asian, Black, or Latino former caregivers, and collecting data in English, Spanish, and Chinese. Participants may receive up to \$160: a 10-minute survey (\$10) and up to three 1-hour interviews (\$75 each) by phone or video. Please help share the news!

Interested participants can contact us by phone, email, or online!

- ☐ (925) 679-5058
- ☐ heard@ucsf.edu
- ☐ heard.ucsf.edu

Contáctanos para participar en español

您可以選擇中文去填写我們的甄別問卷

All information is kept confidential. Participation is voluntary.

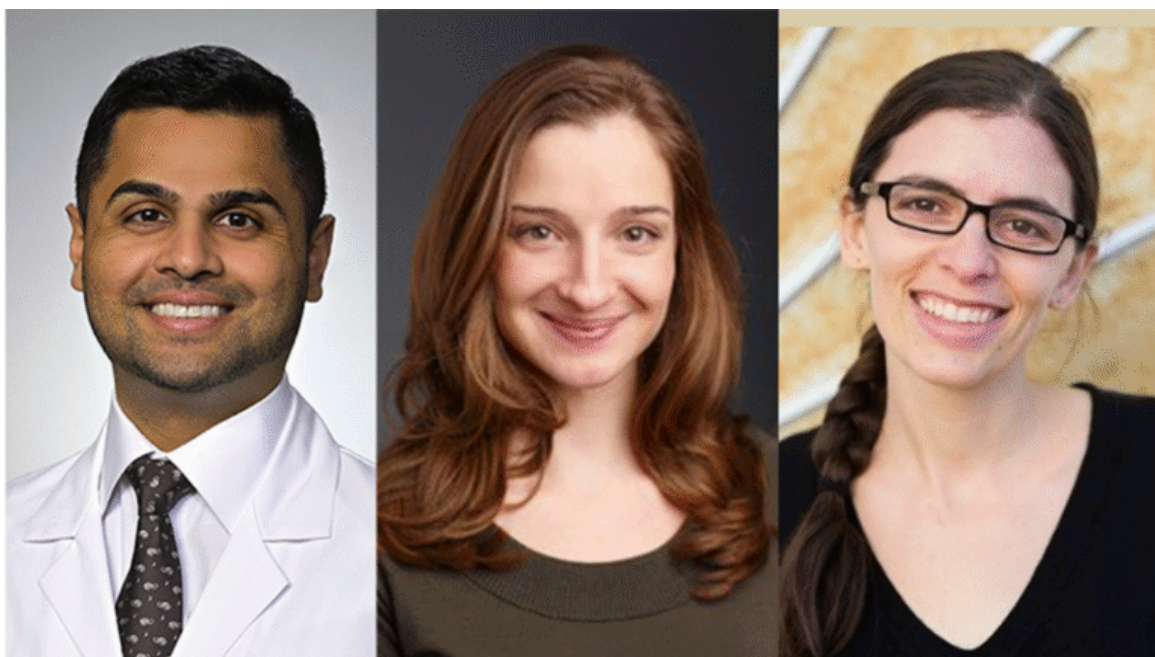


Mitchel Erickson DNP, MS, BSN, BSc, ACNP-C shared this [delightful video](#) showing a boldly created opportunity to embrace older adults with cognitive challenges. If we all could be so bold.

GERIPAL BLOG

GeriPal

Geriatrics & Palliative Care for
All Healthcare Professionals



[What You Should Know About Radiation Oncology: Anish Butala, Emily Martin and Evie Kalmar](#)

[Visit the GeriPal Blog](#)



[Anna Chang, MD](#), Professor of Medicine, Director, Clinical Microsystems Clerkship, Director, Tideswell Emerging Leaders in Aging Program, Associate Chief, Geriatrics Education, Geriatrician, SFVAHCS

[Josette Rivera, MD](#), Professor of Medicine, Director, Geriatrics Workforce Enhancement Program, Co-Director, Dementia Care Aware, Co-Lead, UCSF School of Medicine Interprofessional Education, UCSF Housecalls Physician

Advancing Geriatrics Education: The Science and the Sticky Questions

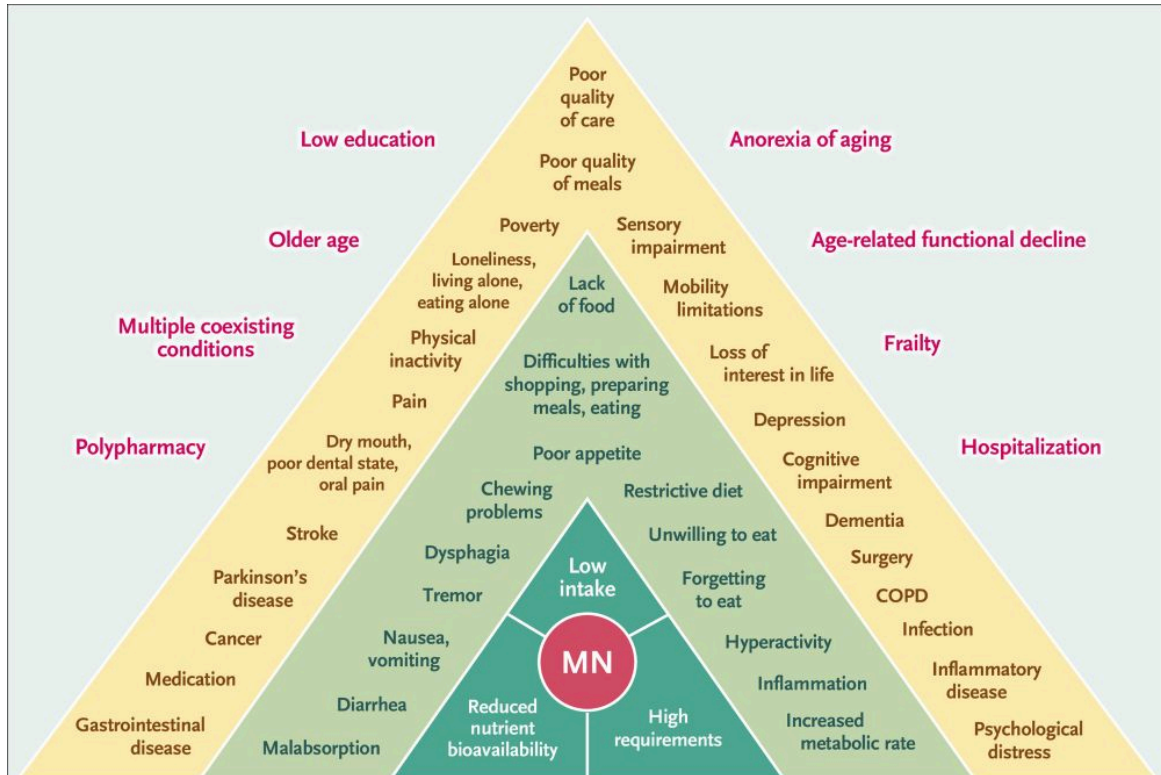
Wednesday, June 25, 2025
4:00 - 5:00 PM

[Register here](#)

[View Past Grand Rounds Recordings](#)

GERI SOCIAL MEDIA POST OF THE WEEK

“



Learned something new today - the Determinants of Malnutrition in Aged Persons (DoMAP) Model, showing potential determinants of malnutrition in older adults. Dark green is central etiologic mechanisms, then it goes farther out for more indirect mechanisms. #medsky
<https://www.nejm.org/doi/full/10.1056/NEJMra2412275>

”

- Eric Widera, MD @ewidera.bsky.social

LEARNING & DEVELOPMENT OPPORTUNITIES



June 25-27 | 8am-6pm | UC Riverside

UC Tech 2025

UC Tech Annual Conference is an annual technology conference hosted by the University of California system to celebrate and promote innovation and collaboration within the community. Each year, a different UC campus is selected to host the technology-centered conference over a few days. Each day features a broad spectrum of talks and interactive sessions designed to enlighten, enrich, and encourage.

[Register here](#)

Welcome to UCSF
Geriatrics Community
Resources



This week's Geri Community Resource is: [SteppingStone's Enhanced Care Management \(ECM\) program](#).



[SteppingStone's Enhanced Care Management \(ECM\)](#)

[program](#) provides personalized, in-person care coordination for Medi-Cal members with complex health and social needs. Launched in 2023, the program connects participants with a dedicated Lead Care Manager who helps them navigate medical, behavioral, and social services. ECM supports individuals facing challenges like frequent hospital visits, housing instability, mental health conditions, or reentry from incarceration. By addressing whole-person care, ECM helps improve health outcomes and quality of life. This program only accepts members who have the San Francisco Health Plan. Please contact the ECM program director for more information: jonathanbeavis@steppingstonehealth.org.

**Find Geriatrics
Community
Resources here**

UPCOMING EVENTS

June 18: Geriatrics
Works in Progress

8:30 - 9:40 AM

Speaker: TBD

[Zoom Link](#)

June 25: Geriatrics
Works in Progress

8:30 - 9:40 AM

Speaker: TBD

[Zoom Link](#)

June 25: Geriatric &
Palliative Care Grand
Rounds

4:00 - 5:00 PM

Speakers: Drs. Anna
Chang & Josette Rivera

[Register here](#)

EMPLOYMENT OPPORTUNITIES

UCSF Division of Geriatrics is Recruiting!

[Click here for more details>>](#)

Current Career Opportunities:

- [Clinician Educator \(JPF05568\)](#)
- [Research Scientist \(JPF05507\)](#)
- [Harris Fishbon Distinguished Professor for Clinical Translational Research in Aging \(JPF05557\)](#)
- [Clinical Social Worker \(85178BR\)](#)

GIVING



Donations play a vital role in sustaining our Mission. [Learn More >>](#)

[Donate now](#)

For questions, comments, or suggestions, email GeriAdmin@ucsf.edu

UCSF Division of Geriatrics | 490 Illinois Street, Floor 8, San Francisco, CA 94143 | geriatrics.ucsf.edu

