

UCSF GeriNews

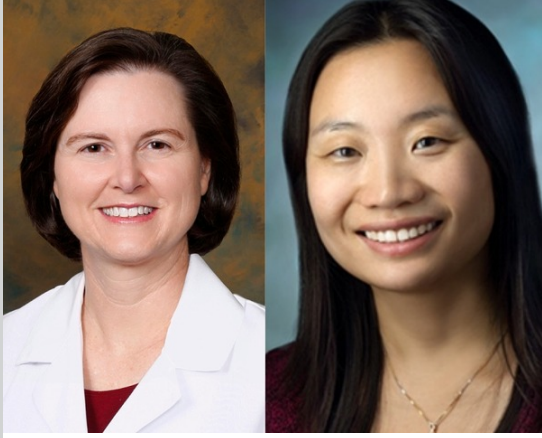
A multi-campus division

November 15th, 2024



We are delighted to announce that **Jackie Buente, LCSW, ECDCS**, has returned to the Division of Geriatrics as our new **GUIDE Program & Operations Manager!**

[Read more](#)



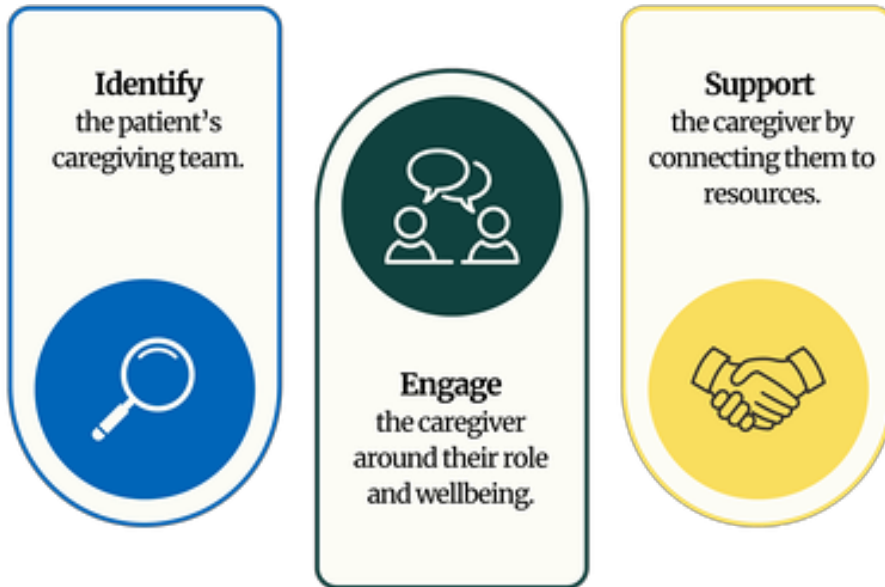
Louise Walter, MD and Nancy Schoenborn, MD published an invited commentary titled "[Do Not Wait to Consider Life Expectancy Until After a Prostate Cancer Diagnosis](#)" in *JAMA Internal Medicine* on November 11, 2024. The commentary discusses the importance of considering life expectancy during PSA screening decisions, rather than waiting until after a prostate cancer diagnosis, in order to reduce harms of prostate cancer overdiagnosis and overtreatment in men with limited life expectancy. Time spent diagnosing, monitoring, and treating screen-detected asymptomatic prostate cancer in men with limited life expectancy distracts from monitoring and treating their symptomatic life-limiting illnesses.



Caregivers As Partners in Care Teams

Training Out Now!

Caregivers As Partners in Care Teams (CAP-CT) is thrilled to announce the launch of its first course, Foundational Skills for Engaging Caregivers in Health Care. The course is designed to help interprofessional primary care teams effectively identify, engage, and support caregivers.



The training is offered as a self-paced, online course with the option to claim free continuing education credits. Visit carepartners.ucsf.edu to take the training now!

[Learn More Here](#)

You are invited to attend the
Dementia Care Aware Webinar Series

Dementia Care Aware: Exciting Updates and New Horizons

Presenters:



Anna Chodos, MD, MPH
Dementia Care Aware



Zia Agha, MD
West Health



Tuesday, Nov., 26, 2024
12 - 1 pm PST via Zoom

www.DementiaCareAware.org



Register Here!



Earn up to 1 CE/CME credit, including
AMA, ANCC, AAPA, and ASWB credit.

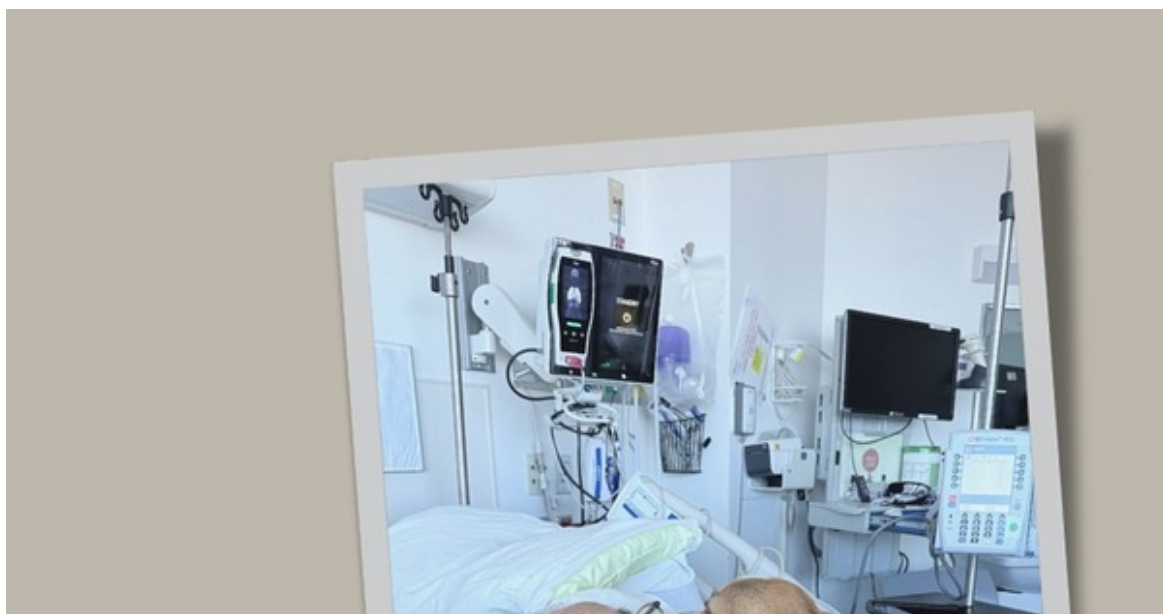
Please join [Dementia Care Aware](http://DementiaCareAware.org) at our next Zoom webinar, “**Dementia Care Aware: Exciting Updates and New Horizons**” on Tuesday, November 26, from 12 to 1 p.m.

Please register for the webinar at: <https://bit.ly/ExcitingUpdatesandNewHorizons>

During this webinar, **Anna Chodos, MD, MPH**, Executive Director of Dementia Care Aware and **Zia Agha, MD**, Chief Medical Officer and EVP Clinical Research, at West Health will discuss Dementia Care Aware’s offerings, achievements, and future goals. Attendees will also have an opportunity to ask questions and provide feedback to inform the program’s growth in meeting the needs of primary care teams.

Participants of the live webinar are eligible to receive 1 CE/CME credit, including AMA, ANCC, AAPA, and ASWB credit.

You may also sign up to take the cognitive health assessment training (1.5 CE and CME credit) at www.dementiacareaware.org.



ACE UNIT PET THERAPY



The Acute Care for Elders (ACE) unit has restarted Pet Therapy this week with the wonderful volunteer escort, Dorla Cantu and Pauline Chin. It was so wonderful to see Noelle (Corgi) brighten our older patients at Parnassus Long Hospital. If you have not yet, please consider donating to our [crowdfunding page](#) to make a meaningful impact on the lives of older adults at UCSF's ACE Unit. With your help, we can implement more activities besides pet therapy in the unit!

*Photos are shared with written permission from patients and families.



[Falls and Fractures: A Podcast with Sarah Berry.](#)

[Visit the GeriPal Blog](#)

GERIATRIC & PALLIATIVE MEDICINE GRAND ROUNDS



[***Esther Oh, MD, PhD***](#)

*Sarah Miller Coulson Human Aging Project Scholar;
Associate Professor, Division of Geriatric Medicine
and Gerontology, Johns Hopkins University School of
Medicine*

**World Delirium Awareness Day - Translating
Knowledge into Action**

Wednesday, December 11th @4:00 - 5:00 PM

Health Sciences West Building, Room 300 (HSW-300)
(In-person)

[Zoom Registration](#) (remote)

[View Past Grand Rounds Recordings](#)

GERI TWEET OF THE WEEK

“
[Interesting viewpoint about consumer wearables to detect Atrial Fibrillation](#). Can detection of short episodes in low risk patients lead to more harm than benefit?
”

- Ken Covinsky @geri_doc

LEARNING & DEVELOPMENT OPPORTUNITIES



Career Coaching Live!

Join Aaron Tabacco, DOM director of staff experience, and three colleagues for live mini-coaching sessions about career decisions.

Friday, 11/22, 12:10–1:00 pm, via Zoom

[Register here](#)

GERI COMMUNITY RESOURCE

Welcome to UCSF
Geriatrics Community
Resources



This week's Geri Community Resource is: [Project Open Hand](#).

[Project Open Hand](#) is a non-profit organization committed to providing 2,500 nutritious meals daily and at least 200 bags of healthy groceries every day to help sustain our community members (San Francisco and Oakland) who are battling serious illness, isolation, or the health challenges of aging. Their community nutrition program is administered across different senior centers such as Aquatic Park Senior Center, Castro Senior Center, Curry Senior Center, Downtown Senior Center, and more. To learn more, please visit openhand.org/cnp or contact 415-447-2379.

CANHR
Long Term Care Justice and Advocacy

[Find Geriatrics
Community
Resources here](#)

UPCOMING EVENTS

November 27: Geriatrics
Works in Progress
8:30 - 9:40 AM
Topic: Conference
Abstract Session
[Zoom Link](#)

December 11: Geriatrics
Grand Rounds
4:00-5:00PM
Speaker: Esther Oh MD,
PhD (Johns Hopkins)
Location: Parnassus,
HSW-303
[Zoom Registration Link](#)

January 22: Geriatrics
Grand Rounds
4:00-5:00PM
Speaker: Nate Chin MD
(U Wisconsin)
Location: Parnassus,
HSW-303
[Zoom Registration Link](#)

EMPLOYMENT OPPORTUNITIES

**UCSF Division of
Geriatrics is
Recruiting!**
[Click here for more
details>>](#)

Current Career Opportunities:

- [Clinician Educator \(JPF05152\)](#)
- [Research Scientist \(JPF04741\)](#)
- [Harris Fishbon Distinguished Professor for
Clinical Translational Research in Aging
\(JPF04285\)](#)

GIVING



Donations play a vital role in sustaining our
Mission. [Learn More >>](#)

[Donate now](#)

For questions, comments, or suggestions, email GeriAdmin@ucsf.edu

UCSF Division of Geriatrics | 490 Illinois Street, Floor 8, San Francisco, CA 94143 | geriatrics.ucsf.edu

